





Parliament Hill, Hampstead NW3

A stunning, beautifully refurbished 3 bedroom ground floor flat, with a 24' kitchen/dining room, opening to a private garden, located moments from Hampstead Heath.

Set over the entire ground floor (not lower ground) of a semi-detached Victorian house, the flat has elegant well-proportioned principal rooms, beautiful features, wooden floors and high ceilings.

Reception room • 24' kitchen/dining room • 17' master bedroom & ensuite
• 2 further bedrooms • bathroom • cellar • private garden • residents permit parking
• EPC rating D

The property is situated in the popular South Hill Park Conservation Area, a popular family neighbourhood, with Hampstead Heath less than a 1 minute walk.

South End Green is close by, with an excellent mix of cafes, gastro pubs, neighbourhood restaurants and shops, including delicatessens and Marks & Spencer; while Hampstead Village is just a short stroll (0.6 miles).

Hampstead Heath (London Overground Station) is less than 5 minute walk. The nearest London Underground station is Belsize Park (Northern Line) is 0.7 miles. There are also frequent bus and night bus services from South End Green.

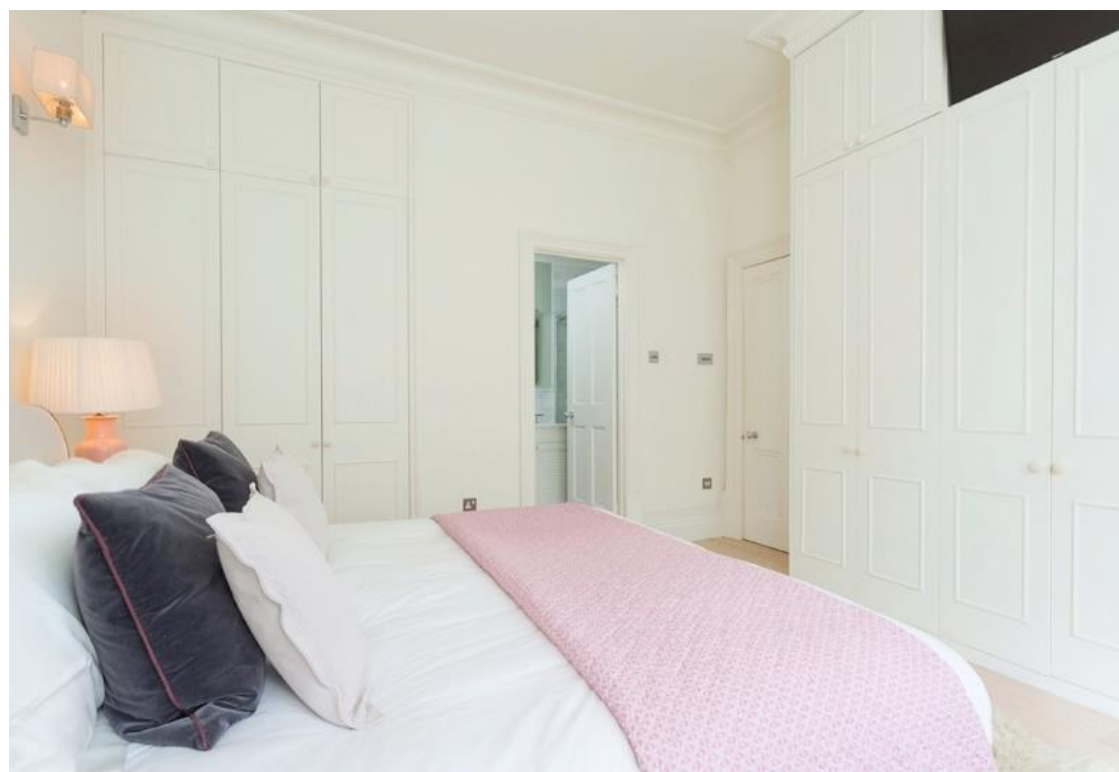
£1,950,000 Share of Freehold. Sole Agents.

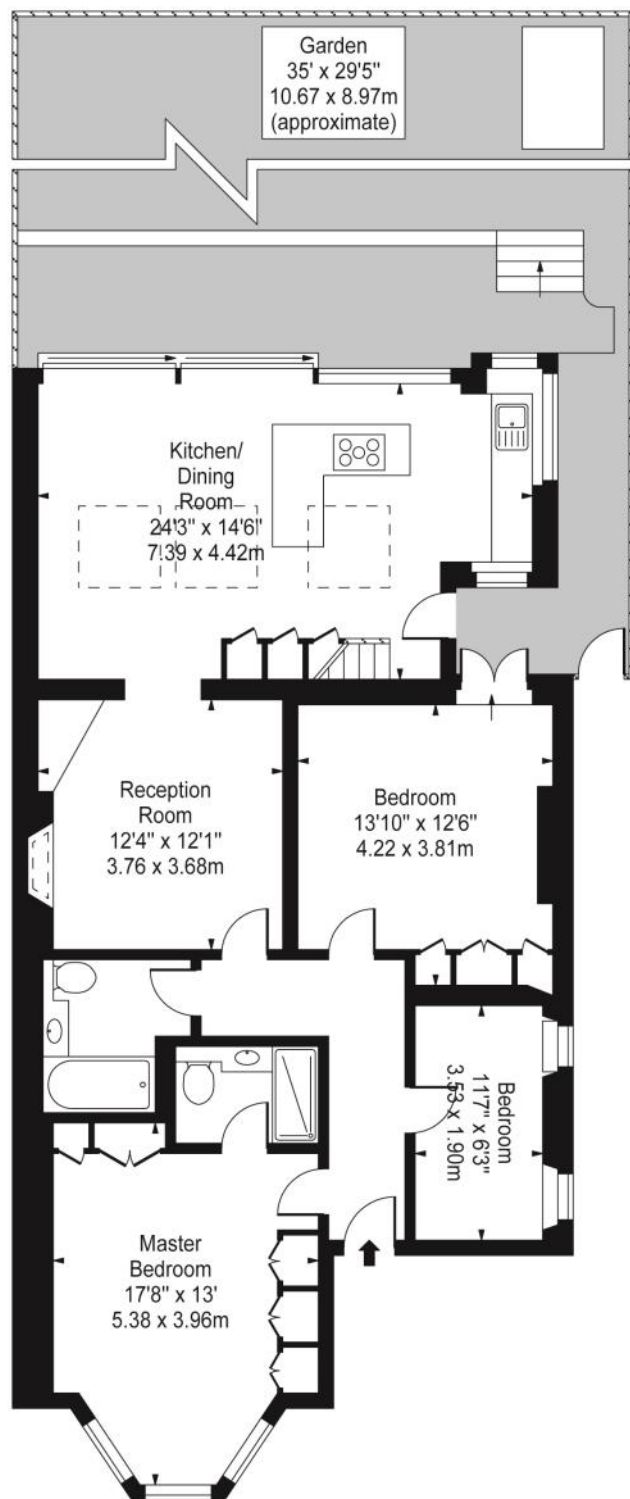








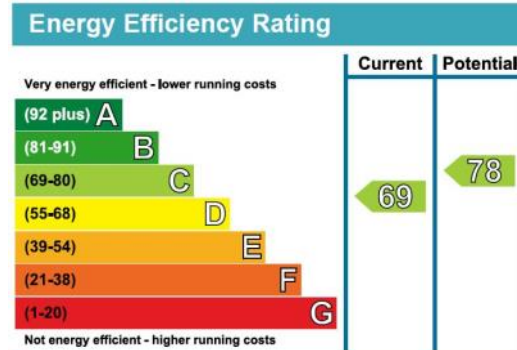




Gross Internal Area (approximate)
1,130 Sq Ft - 105 Sq M

For Illustration Purposes Only - Not to Scale
Floor Plan by www.nogaphotostudio.com

This floor plan should be used as a general outline for guidance only.
Any intending purchaser or lessee should satisfy themselves by inspection,
searches, enquiries and full survey as to the correctness of each statement.
Any areas, measurements or distances quoted are approximate
and should not be used to value a property or be the basis of any sale or let.



Telephone 020 7794 7794

