
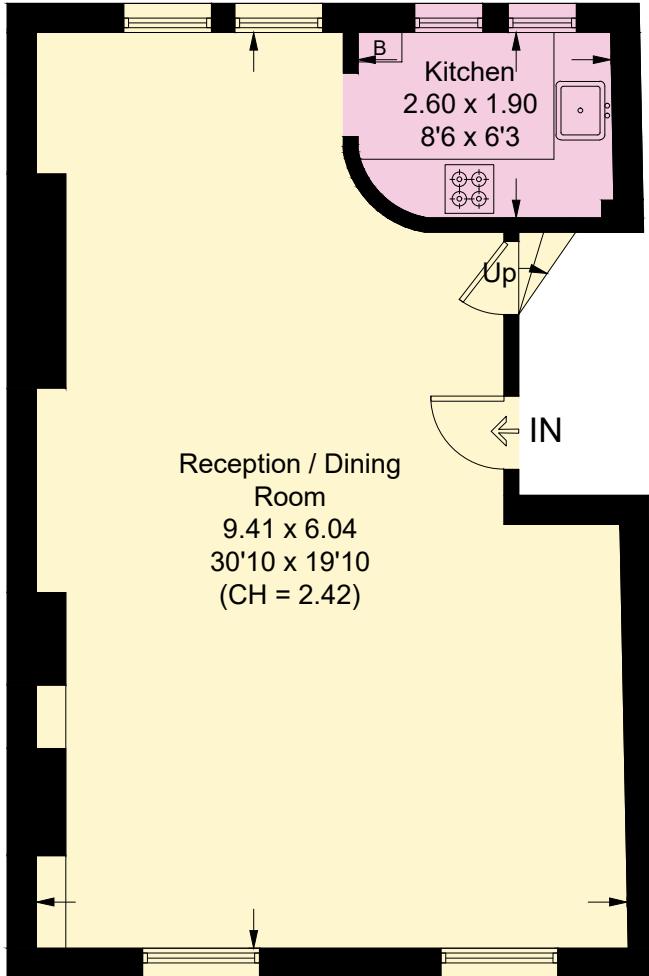


Primrose Gardens, NW3

Approximate Area = 91.3 sq m / 982 sq ft
Including Limited Use Area (6.8 sq m / 73 sq ft)

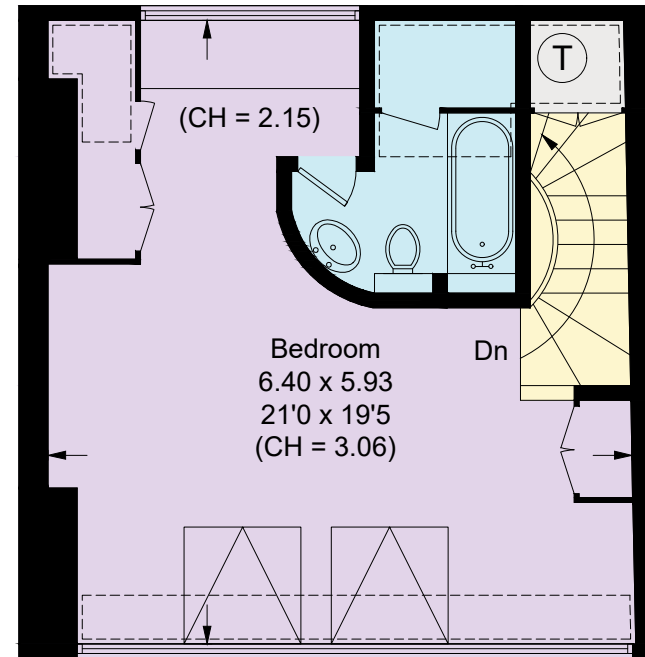


 = Reduce head height below 1.5m



Second Floor

Approximate Area = 53.1 sq m / 571 sq ft



Third Floor

Approximate Area = 38.2 sq m / 411 sq ft
Including Limited Use Area (6.8 sq m / 73 sq ft)

Surveyed and drawn in accordance with the International property measurements standards (IPMS 2: Residential) Not drawn to scale unless stated.
Whilst every care is taken in the preparation of this plan, please check all dimensions, shapes and compass bearings before making any decisions reliant upon them.