

Hampstead Hill Gardens, Hampstead NW3
£1,800,000 Leasehold. Subject to Contract. Sole Agents





Hampstead Hill Gardens, Hampstead NW3

An rare penthouse maisonette (1741 Sq Ft - 161.95 Sq M), with stunning view and two balconies; accessed via a private passenger lift.

The property is set over the 2nd and 3rd floors of a handsome stucco fronted house, in a desirable location.

Reception room • dining room • kitchen • bathroom • 2 guest WCs • master bedroom
• two further bedrooms • 2 balconies

The property is situated a short walk from boutiques, delicatessens, neighbourhood restaurants & cafes in Belsize Park and Hampstead Heath, London's largest natural green space is a short stroll

The closest London Underground station is Belsize Park (Northern Line), which is approximately a 5 minute walk. The Hampstead Heath London Overground Station is also approximately a 5 minute walk away, where travel to Canary Wharf requires a single change.

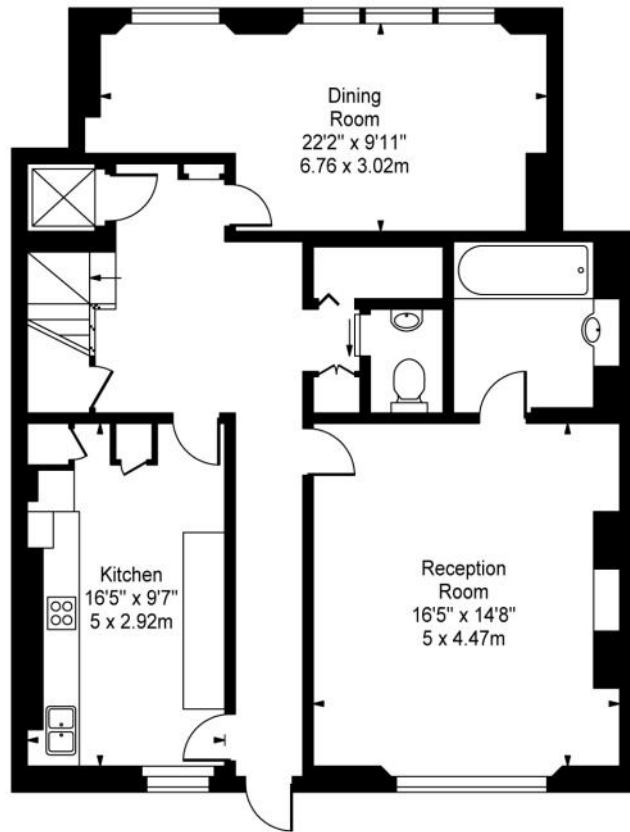
Residents permit parking is available

£1,800,000, subject to contract. Leasehold, sole agents.

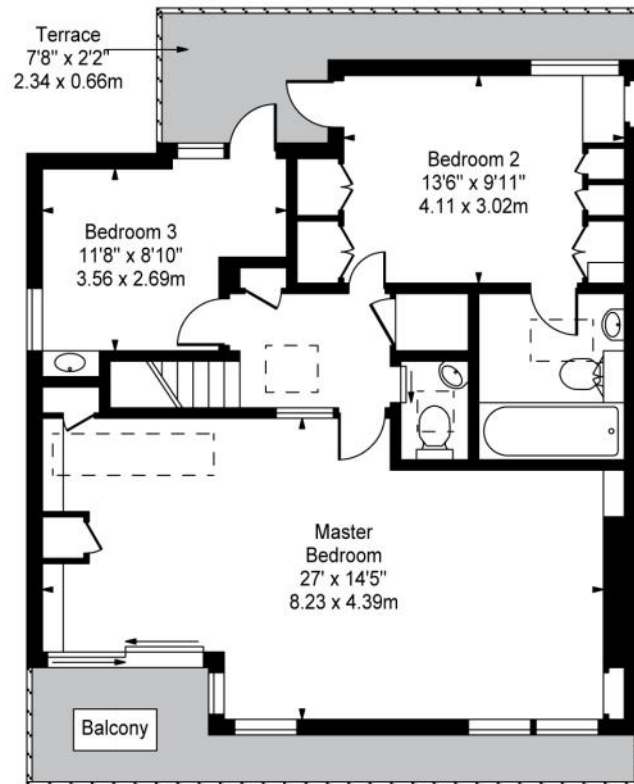




Upper Maisonette, NW3



Second Floor

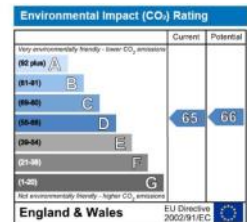
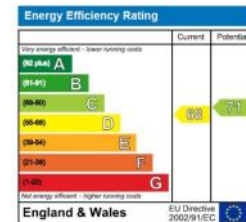


Third Floor

Approx. Gross Internal Area
1741 Sq Ft - 161.95 Sq M

For Illustration Purposes Only - Not to Scale - Floor Plan by www.bkrfloorplans.co.uk

This floor plan should be used as a general outline for guidance only. Any intending purchaser or lessee should satisfy themselves by inspection, searches, enquiries and full survey as to the correctness of each statement. Any areas, measurements or distances quoted are approximate and should not be used to value a property or be the basis of any sale or let.



Telephone 020 7794 7794

